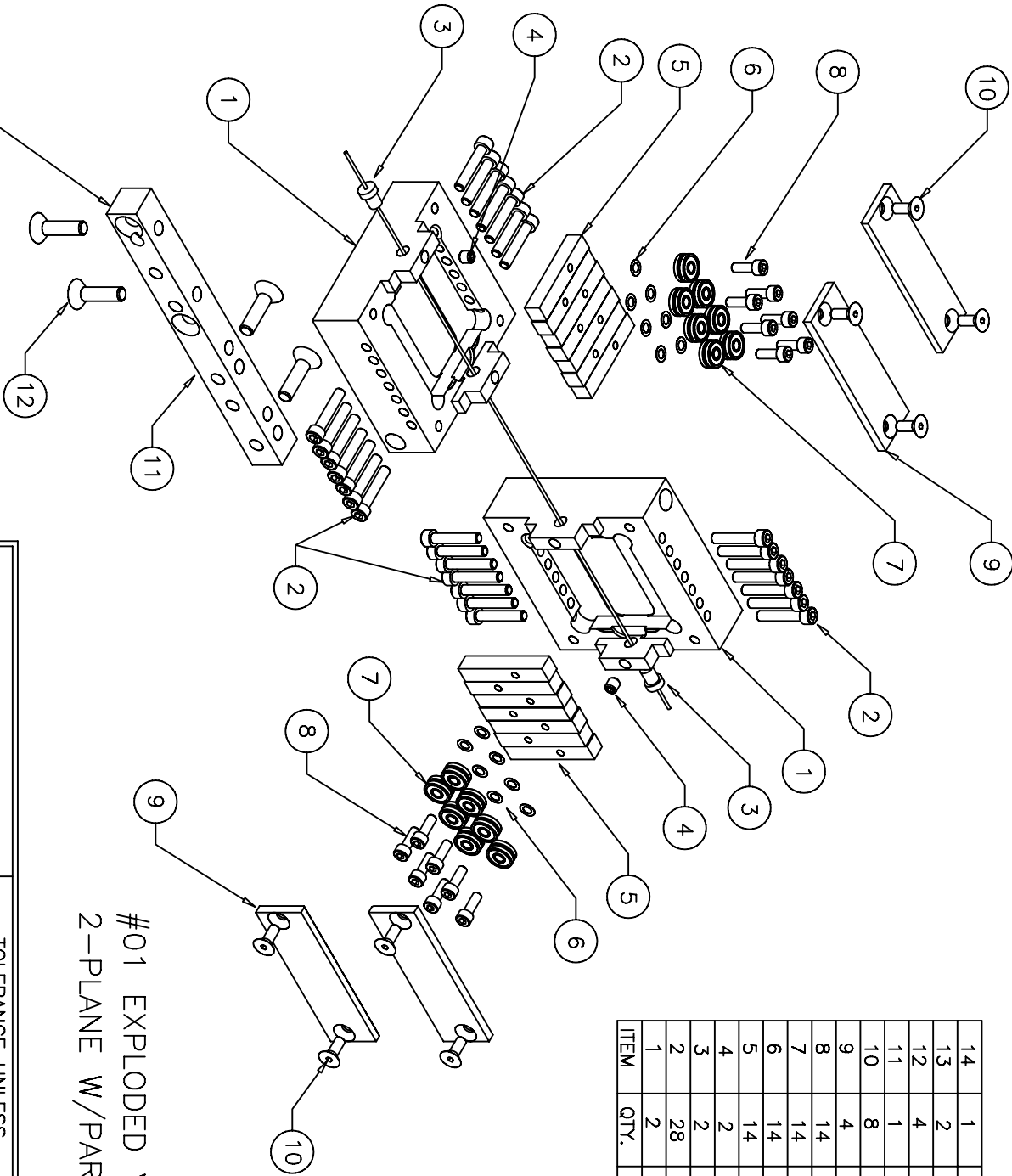


MATERIAL REQ'D.

R.C.

ITEM	QTY.	PART NUMBER	DESCRIPTION
14	1	1300-001	SLIP TORQUE KNOB ASSY #1 N/S
13	2	9805-002	LOGO PLATE N/S
12	4	9001-032	10-32 X 3/4 FHCS
11	1	1001-184	UNIVERSAL CONNECTOR
10	8	9001-032	6-32 X 3/8 FHCS
9	4	1001-112	ROLL CAP
8	14	9000-026	5-40 X 3/8 SHCS
7	14	9301-171	STANDARD "V" BEARING
6	14	9008-108	SHIM WASHER
5	14	1001-130	ROLL PLATE
4	2	9003-407	8-32 X 3/16 HSSS NYLON TIP
3	2	9800-003	.048 ID CERAMIC WIRE GUIDE
2	28	9000-046	#6-40 X 3/4 SHCS
1	2	1001-111	#1 UNIBODY HOUSING



#01 EXPLODED VIEW
2-PLANE W/PART LIST

REV	ECN	CHG BY	DATE

MACHING MARK ON
BOTTOM USED FOR
ALIGNMENT



TOLERANCE UNLESS OTHERWISE STATED	
$\pm .3'$	FRACT +/- 1/16
± 0.0003	X $\pm .032$
± 0.0002	.XX $\pm .015$
± 0.0005	.XXX $\pm .005$
± 0.0005	.XXXX $\pm .0005$

CAD	DWN	KPL	PART NAME
			#01 UNIBODY ASSY.
			CUSTOMER

DRAWING / PART NO.
1001-002

DATE 4/4/02