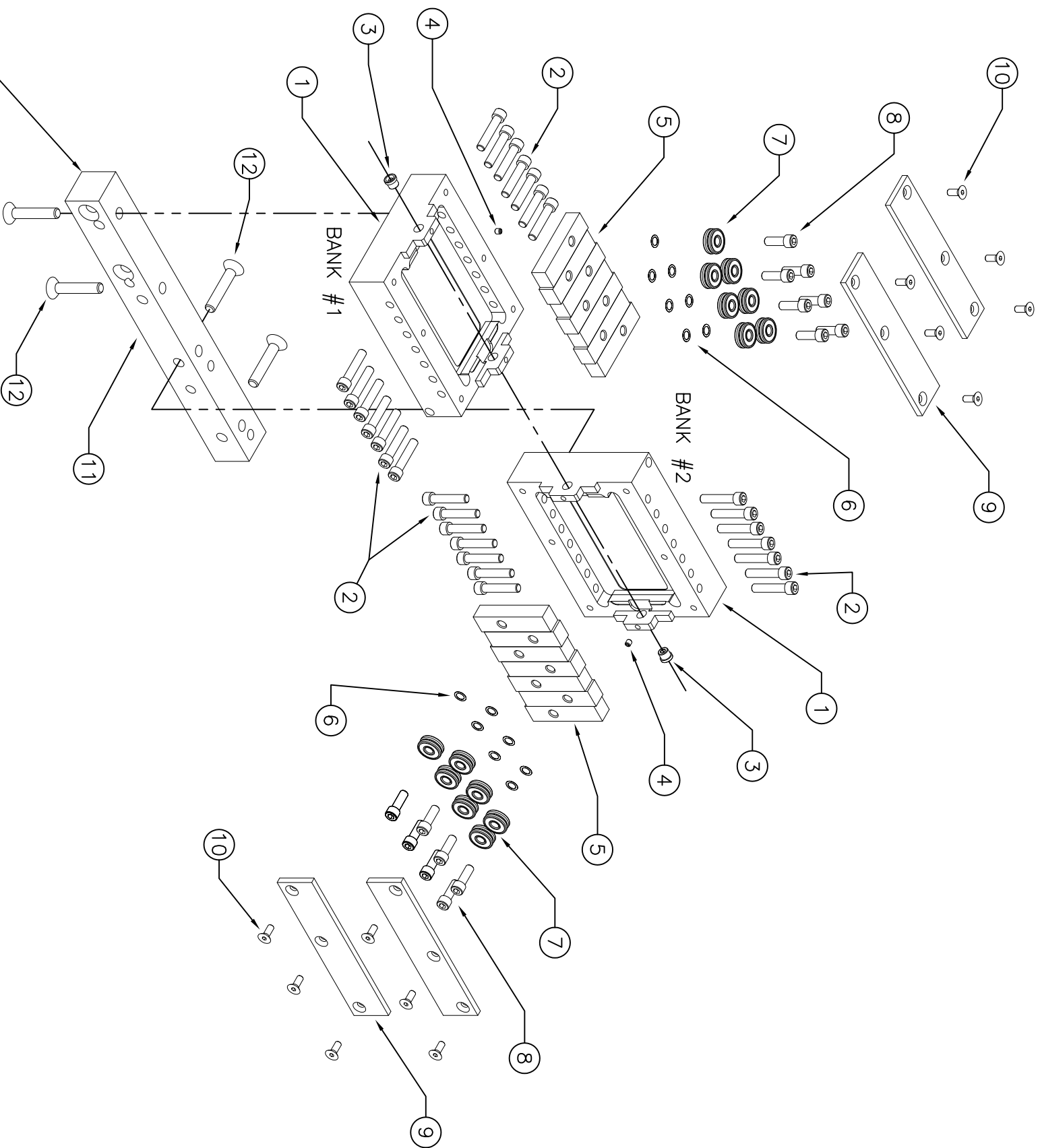
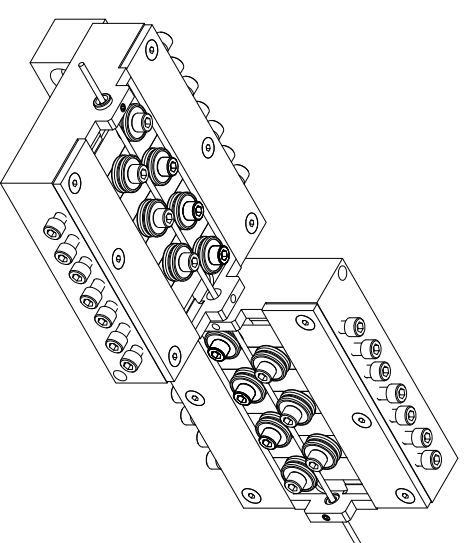


No.	PART NUMBER	DESCRIPTION	QTY.
1	1003-111	UNIBODY HOUSING	2
2	9000-110	1/4-20 X 3/4" SHCS	28
3	9800-005	CERAMIC WIRE GUIDE	2
4	9003-407	#8-32 X 3/16" SET SCREW	2
5	1003-130	ROLL PLATE	14
6	9008-110	SHIM WASHER	14
7	9303-171	V-GROOVE BEARING	14
8	9000-090	1/4-20 X 3/4" SHCS	14
9	1003-112	ROLL CAP	4
10	9001-074	#10-32 X 1/2" FHCS	12
11	1003-177	UNIVERSAL CONNECTOR	1
12	9001-123	5/16-18 X 1-3/4" FHCS	4
13	9805-002	NAMEPLATE (NOT SHOWN)	2
14	1300-002	SLIP TORQUE ASSY (NOT SHOWN)	1



MACHINE MARK ON BOTTOM
USED FOR CORRECT POSITION
OF CONNECTOR



NOTE:
STAMP JOB # FROM TRAVELER IN AREA
UNDER ADJUSTMENT SCREWS AND CENTERED.

#03 2-PLANE EXPLODED VIEW

REV	ECN	CHG BY	DATE
	REDRAWN	DPC	7/9/2018

TOLERANCE UNLESS OTHERWISE STATED		CAD	DRAWING/PART NO.
± .0005	± .0015	KPL	1003-002
± .0002	± .005	DWN	PART NAME
± .0003	± .006	CHK	#03 2-PLANE ASSY.
± .0005	± .006	SCALE	W/ PARTS LIST
± .0005	± .006	DATE 4/2/02	CUSTOMER

