

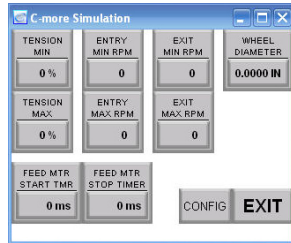


Programmable Rotary Wire Straightener

Standard PRWS Features



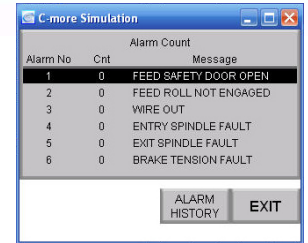
Line Tension – Spindle Speeds – Feed Speed – Alarms



Parameter Default Setting



**Running Status
Tension – Entry Speed
Exit Speed – Feed Speed**



**Alarm Count & Type
Alarm History**



**Integrated Side Payoff
Programmable Back Tension**



**Wire Anti-twist Device
Wire Cleaner Lubricator**



**Counter Rotating
Programmable Speed
Arbors**



**Programmable Speed
Tractor Style Feeder**

Standard PRWS #0 Specifications

- Wire Size Range .004" to .030" (0.1mm to 0.75mm)
- Spool Diameter 30" (750mm) Max.
- Spool Width 4" (100mm) Max.
- Spool Weight 50 Lbs (22.7 Kg) Max.
- Spool Tension Adjustment Value 0-35 in/lbs at Shaft – 1% increments
- Clamping Feed Roll Spring Loaded – Manual Release
- Arbor Speed Adjustment Value 0-12,000 RPM – 1 RPM increments – Matched or Un-matched values
- Feed Speed Adjustment 0-100 Fpm (1/10th FPM increment) – 0-30.5 Mpm
- Available I/O for Integration Remote Start / Stop – Fault input / Output – Loop Control Start / Stop – Fault input / output - Remote Jog
- Operating Voltage 208V 3 phase, 60 Hz – 20 amp
- System Floor Space 24" x 60" (600mm x 1,500mm)
- System Weight 1,200 Lbs (545 Kg)
- Standard System Accessories Wire Cleaner / Lubricator – Anti-twist Device
- Optional Items Safety Light Curtain – Loop Control



PRWS w/ Light Curtain