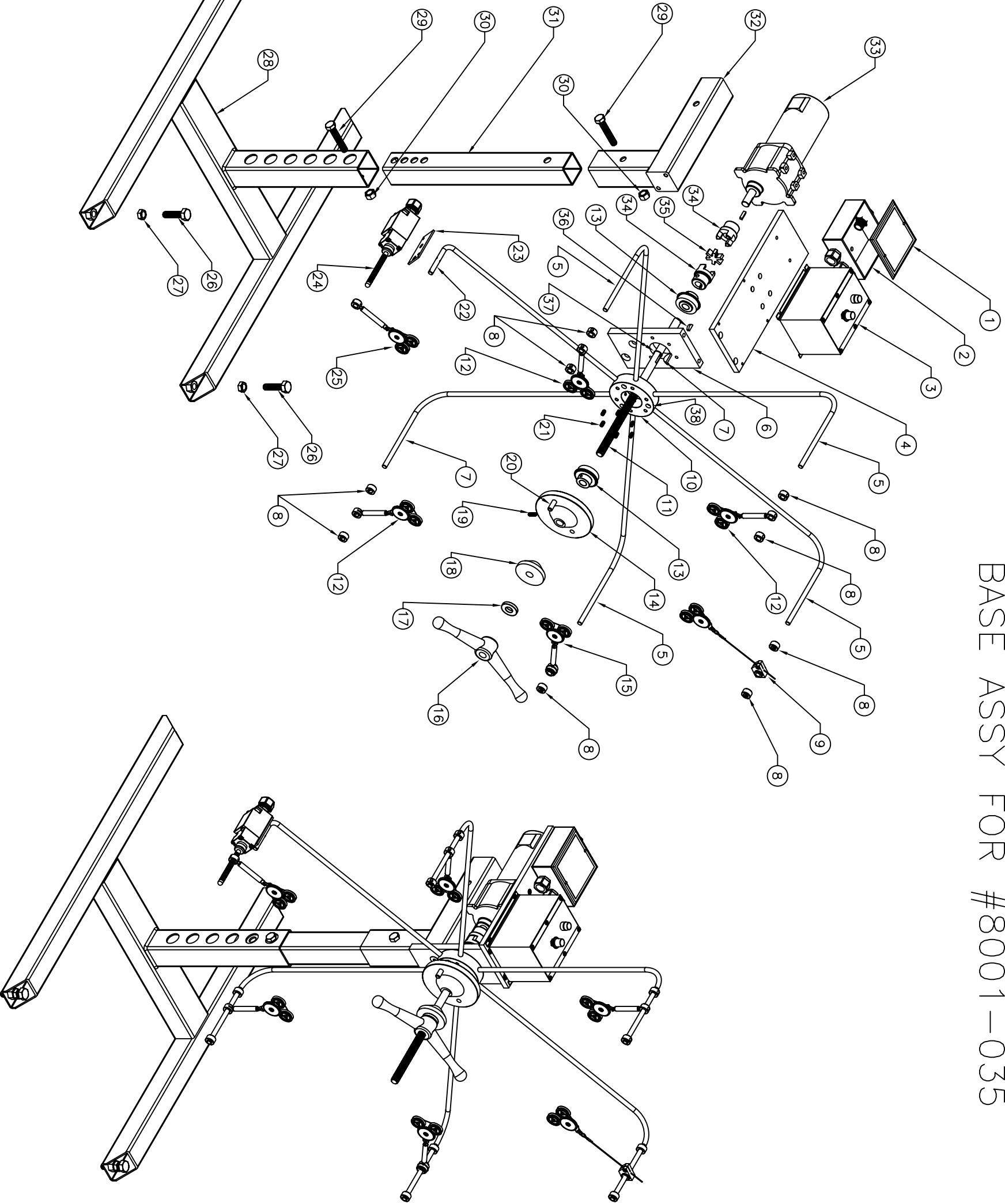


#8001-016 SPOOL ASSY 24" BASE ASSY FOR #8001-035



ITEM#	PART NUMBER	DESCRIPTION	QTY
38	9000-093	1/4-20 X 1-1/4 SHCS	3
37	9008-653	5/8" SHAFT SNAP RING	1
36	9007-315	KEY 3/16 TK X Ø3/4	1
35	9201-007	5/8" SPIDER SPACER	1
34	9201-006	5/8" FLEX COUPLING	2
33	9100-034	GEAR MOTOR	1
32	8001-117	T ADAPTER	1
31	8001-115	RISER TUBE	1
30	9006-103	1/2-13 HH NUT	2
29	9004-012	1/2-13 X 2.75 BOLT	2
28	8001-127	BASE FRAME	1
27	9006-002	1/2-13 JAM NUT	2
26	9004-011	1/2-13 X 1.5 HH BOLT	2
25	8001-023	SWITCH GUIDE ASSY	1
24	9100-017	MICRO SWITCH #BLS152-#6P689	1
23	8001-126	MICRO SWITCH PLATE	1
22	8001-173	SWITCH ARM	1
21	9003-089	1/4-20 X .50 SET SCREW	6
20	9007-065	3/8 DIA. X 1-1/4 LG DOWEL	1
19	9003-091	1/4-20 X .75 SET SCREW	1
18	8001-148	SPOOL WEDGE	1
17	9008-122	HARD WASHER	1
16	9010-024	T-HANDLE	1
15	8001-020	GUIDE ASSY	1
14	8001-161	TAPER SPOOL HUB	1
13	9310-012	5/8" ID SHAFT BEARING	2
12	8001-019	ROLLER GUIDE ASSY	3
11	8001-154	SHAFT	1
10	8001-119	GUIDE ARM RETAINER HUB	1
9	8001-021	CABLE GUIDE ASSY	1
8	9011-012	COLLARS	10
7	9007-317	KEY 3/16	1
6	8001-150	ARM HUB SUPPORT PLATE	1
5	8001-171	GUIDE ARM	5
4	8001-153	MOTOR & CONTROL MOUNT	1
3	9100-015	DC SPEED CONTROLLER	1
2	9102-008	WEATHER PROOF BOX	1
1	9102-009	WEATHER PROOF BOX COVER	1

MATERIAL REQ'D. R.C.



TOLERANCE UNLESS OTHERWISE SPECIFIED	CAD	DRAWING / PART NO.
± .3	FRAC ± .1/16	8001-016
± 0.0003	X	PART NAME
± 0.0002	XX	24" SPOOL ASSY
± 0.0005	XXX	W/ROLLER GUIDES
± 0.0005	XXXX	CUSTOMER
± 0.0005	DATE 10/11/02	

REV	ECN	CHG BY	DATE